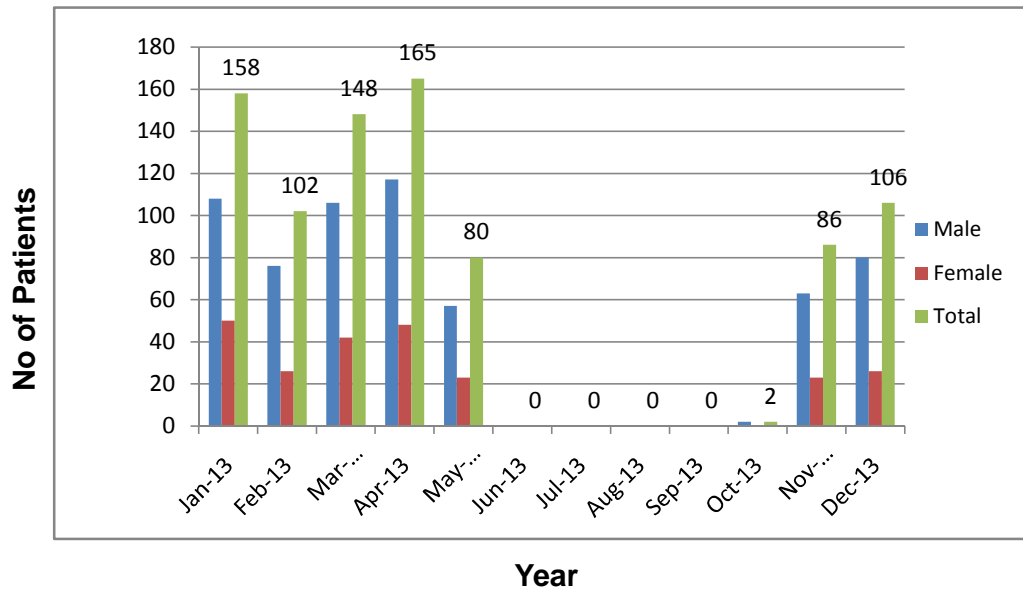


Karachi Institute of Heart Diseases
Summary of Angiography
Jan 2013 To Dec 2013

S.No	Month & Year	Male	Female	Total
1	Jan-13	108	50	158
2	Feb-13	76	26	102
3	Mar-13	106	42	148
4	Apr-13	117	48	165
5	May-13	57	23	80
6	Jun-13	0	0	0
7	Jul-13	0	0	0
8	Aug-13	0	0	0
9	Sep-13	0	0	0
10	Oct-13	2	0	2
11	Nov-13	63	23	86
12	Dec-13	80	26	106
Total		609	238	847

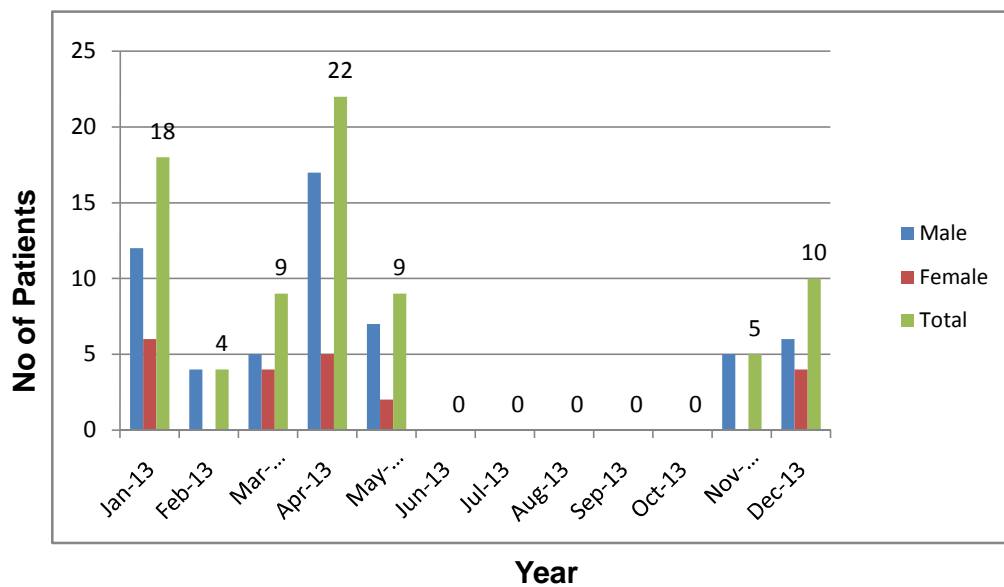
Summary Of Angiography
Jan 2013 - Dec 2013



Karachi Institute of Heart Diseases
Summary of Angioplasty
Jan 2013 To Dec 2013

S.No	Month & Year	Male	Female	Total
1	Jan-13	12	6	18
2	Feb-13	4	0	4
3	Mar-13	5	4	9
4	Apr-13	17	5	22
5	May-13	7	2	9
6	Jun-13	0	0	0
7	Jul-13	0	0	0
8	Aug-13	0	0	0
9	Sep-13	0	0	0
10	Oct-13	0	0	0
11	Nov-13	5	0	5
12	Dec-13	6	4	10
Total		56	21	77

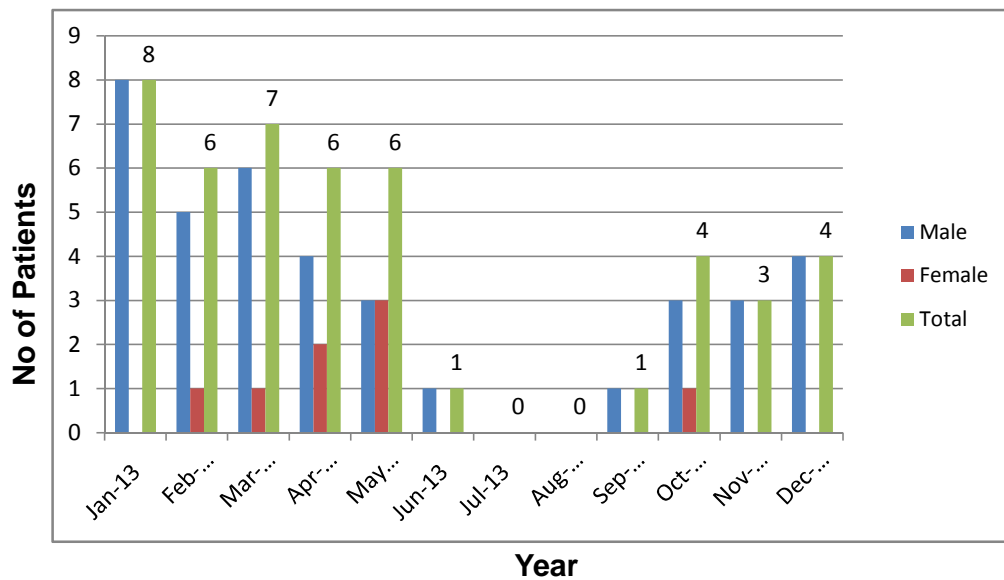
Summary Of Angioplasty
Jan 2013 - Dec 2013



Karachi Institute of Heart Diseases
Summary of Bypass
Jan 2013 To Dec 2013

S.No	Month & Year	Male	Female	Total
1	Jan-13	8	0	8
2	Feb-13	5	1	6
3	Mar-13	6	1	7
4	Apr-13	4	2	6
5	May-13	3	3	6
6	Jun-13	1	0	1
7	Jul-13	0	0	0
8	Aug-13	0	0	0
9	Sep-13	1	0	1
10	Oct-13	3	1	4
11	Nov-13	3	0	3
12	Dec-13	4	0	4
Total		38	8	46

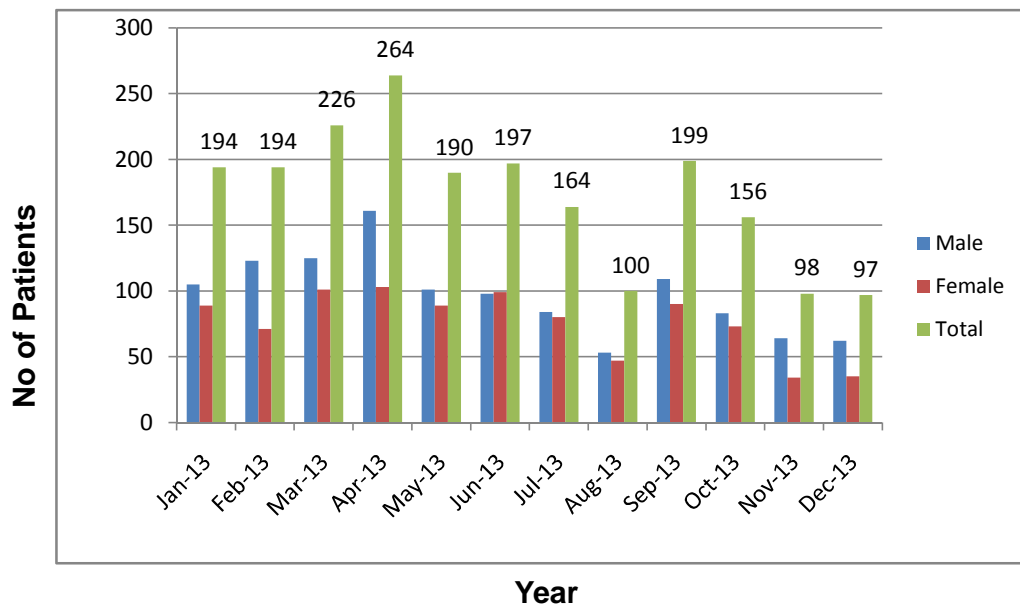
Summary Of Bypass
Jan 2013 - Dec 2013



Karachi Institute of Heart Diseases
Summary of Thallium
Jan 2013 To Dec 2013

S.No	Month & Year	Male	Female	Total
1	Jan-13	105	89	194
2	Feb-13	123	71	194
3	Mar-13	125	101	226
4	Apr-13	161	103	264
5	May-13	101	89	190
6	Jun-13	98	99	197
7	Jul-13	84	80	164
8	Aug-13	53	47	100
9	Sep-13	109	90	199
10	Oct-13	83	73	156
11	Nov-13	64	34	98
12	Dec-13	62	35	97
Total		1168	911	2079

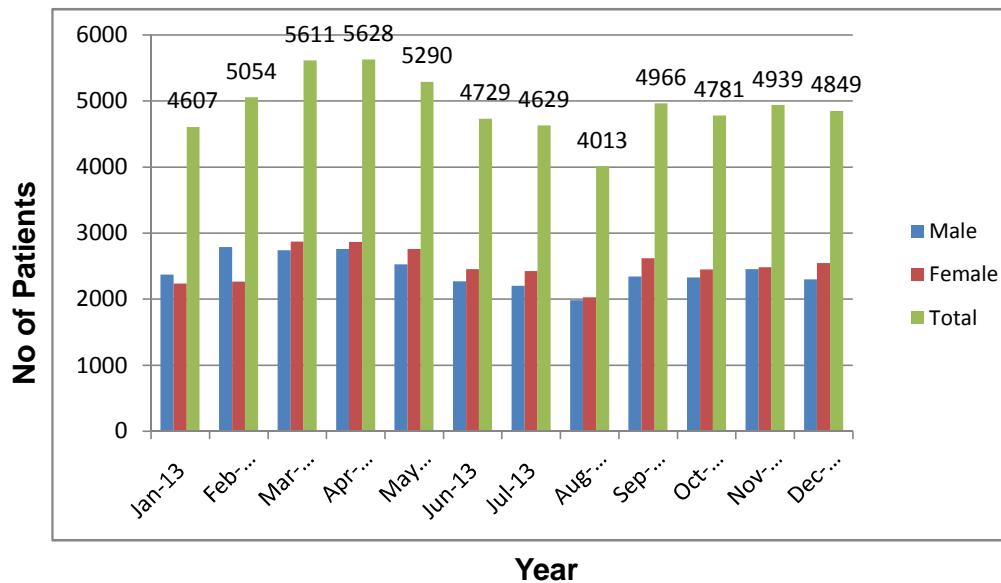
Summary Of Thallium
Jan 2013 - Dec 2013



Karachi Institute of Heart Diseases
Summary of OPD
Jan 2013 To Dec 2013

S.No	Month & Year	Male	Female	Total
1	Jan-13	2372	2235	4607
2	Feb-13	2788	2266	5054
3	Mar-13	2741	2870	5611
4	Apr-13	2760	2868	5628
5	May-13	2530	2760	5290
6	Jun-13	2273	2456	4729
7	Jul-13	2203	2426	4629
8	Aug-13	1985	2028	4013
9	Sep-13	2346	2620	4966
10	Oct-13	2331	2450	4781
11	Nov-13	2457	2482	4939
12	Dec-13	2302	2547	4849
Total		29088	30008	59096

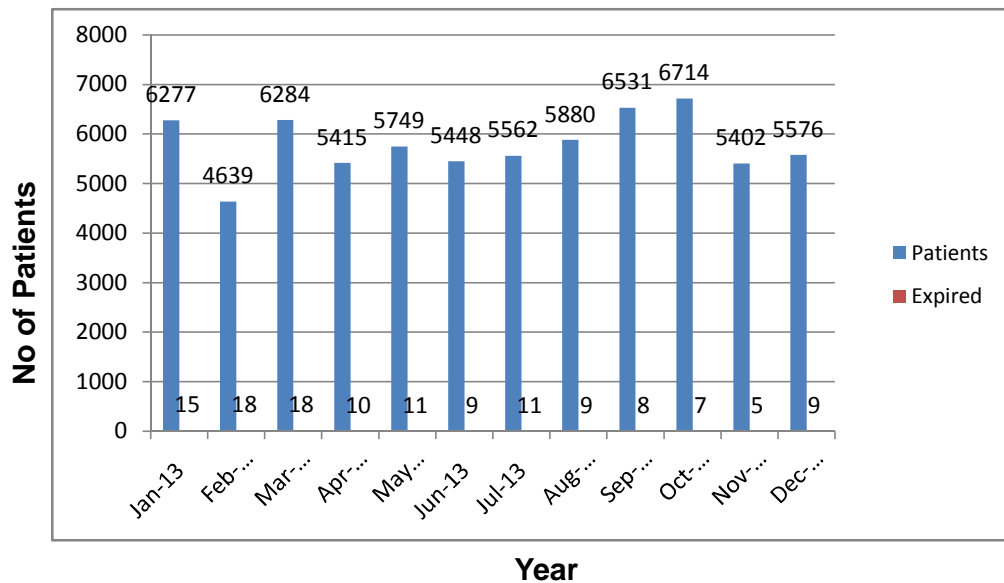
Summary Of O.P.D
Jan 2013 - Dec 2013



Karachi Institute of Heart Diseases
Summary of ER
Jan 2013 To Dec 2013

S.No	Month & Year	Patients	Expired	B.D	% of Exp
1	Jan-13	6277	15	74	0.2389
2	Feb-13	4639	18	69	0.388
3	Mar-13	6284	18	60	0.143
4	Apr-13	5415	10	62	0.1846
5	May-13	5749	11	34	0.1913
6	Jun-13	5448	9	63	0.165
7	Jul-13	5562	11	51	0.19777
8	Aug-13	5880	9	63	0.1531
9	Sep-13	6531	8	54	0.12249
10	Oct-13	6714	7	66	0.10426
11	Nov-13	5402	5	47	0.09255
12	Dec-13	5576	9	69	0.1614
Total		69477	130	712	0.1871

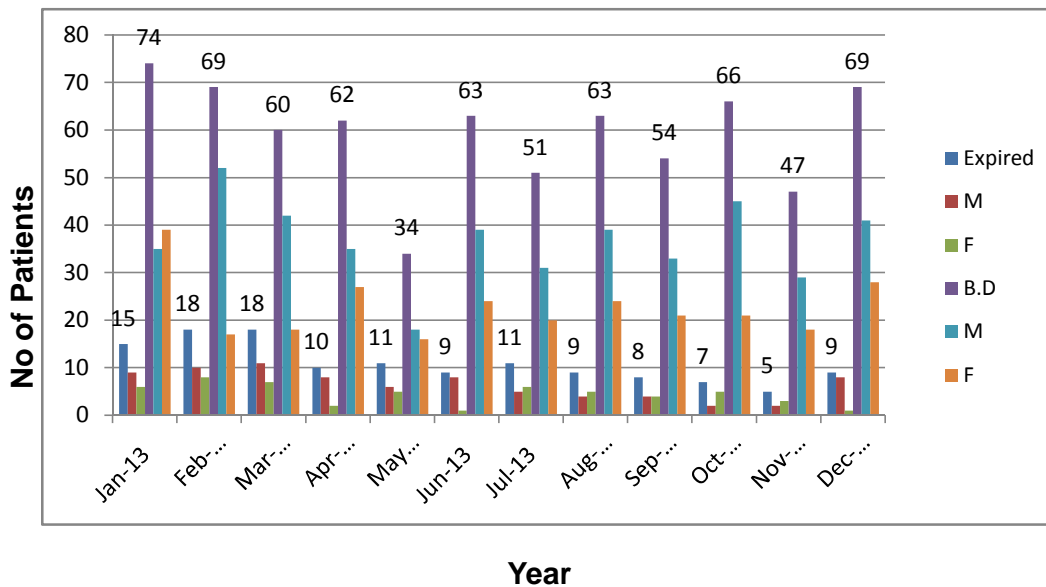
Summary Of E.R
Jan 2013 - Dec 2013



Karachi Institute of Heart Diseases
Summary of ER (Expire & BD)
Jan 2013 To Dec 2013

S.No	Month & Year	Expired	M	F	B.D	M	F
1	Jan-13	15	9	6	74	35	39
2	Feb-13	18	10	8	69	52	17
3	Mar-13	18	11	7	60	42	18
4	Apr-13	10	8	2	62	35	27
5	May-13	11	6	5	34	18	16
6	Jun-13	9	8	1	63	39	24
7	Jul-13	11	5	6	51	31	20
8	Aug-13	9	4	5	63	39	24
9	Sep-13	8	4	4	54	33	21
10	Oct-13	7	2	5	66	45	21
11	Nov-13	5	2	3	47	29	18
12	Dec-13	9	8	1	69	41	28
Total		130	77	53	712	439	273

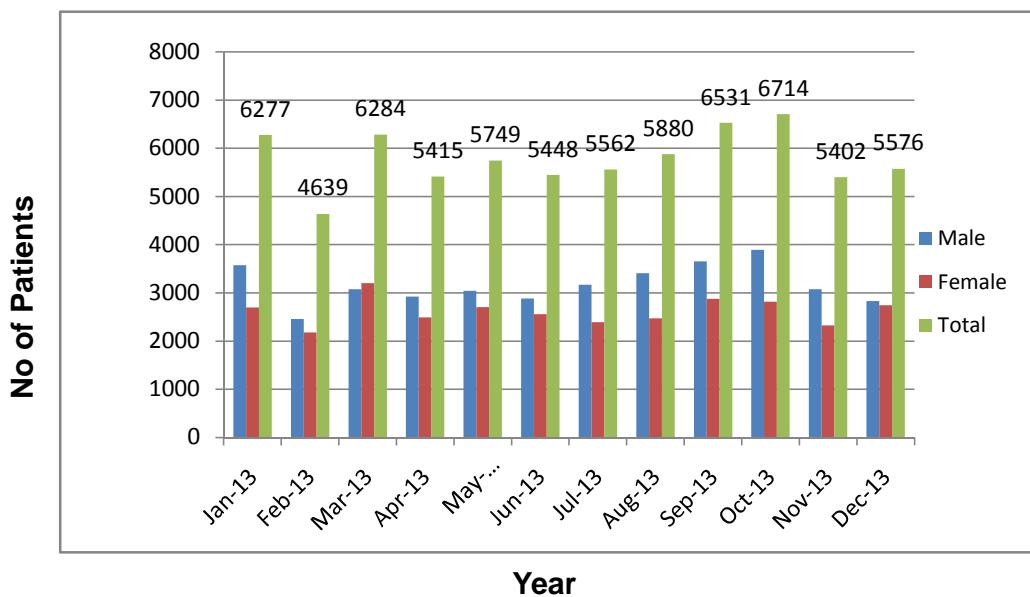
Summary Of E.R(Expire & BD)
Jan 2013 - Dec 2013



Karachi Institute of Heart Diseases
Summary of ER
Jan 2013 To Dec 2013

S.No	Month & Year	Male	Female	Total
1	Jan-13	3578	2699	6277
2	Feb-13	2458	2181	4639
3	Mar-13	3079	3205	6284
4	Apr-13	2924	2491	5415
5	May-13	3046	2703	5749
6	Jun-13	2887	2561	5448
7	Jul-13	3170	2392	5562
8	Aug-13	3410	2470	5880
9	Sep-13	3657	2874	6531
10	Oct-13	3894	2820	6714
11	Nov-13	3079	2323	5402
12	Dec-13	2833	2743	5576
Total		38015	31462	69477

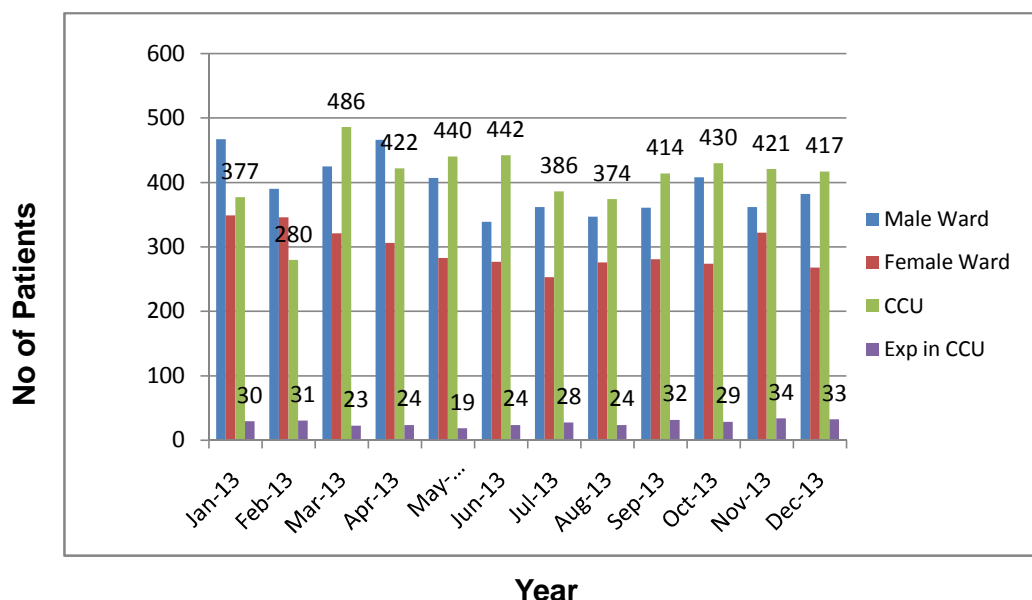
Summary Of E.R
Jan 2013 - Dec 2013



Karachi Institute of Heart Diseases
Summary of Admission
Jan 2013 To Dec 2013

S.No	Month & Year	Male Ward	Female Ward	CCU	Exp in CCU
1	Jan-13	467	349	377	30
2	Feb-13	390	346	280	31
3	Mar-13	425	321	486	23
4	Apr-13	466	306	422	24
5	May-13	407	283	440	19
6	Jun-13	339	277	442	24
7	Jul-13	362	253	386	28
8	Aug-13	347	276	374	24
9	Sep-13	361	281	414	32
10	Oct-13	408	274	430	29
11	Nov-13	362	322	421	34
12	Dec-13	382	268	417	33
Total		4716	3556	4889	331

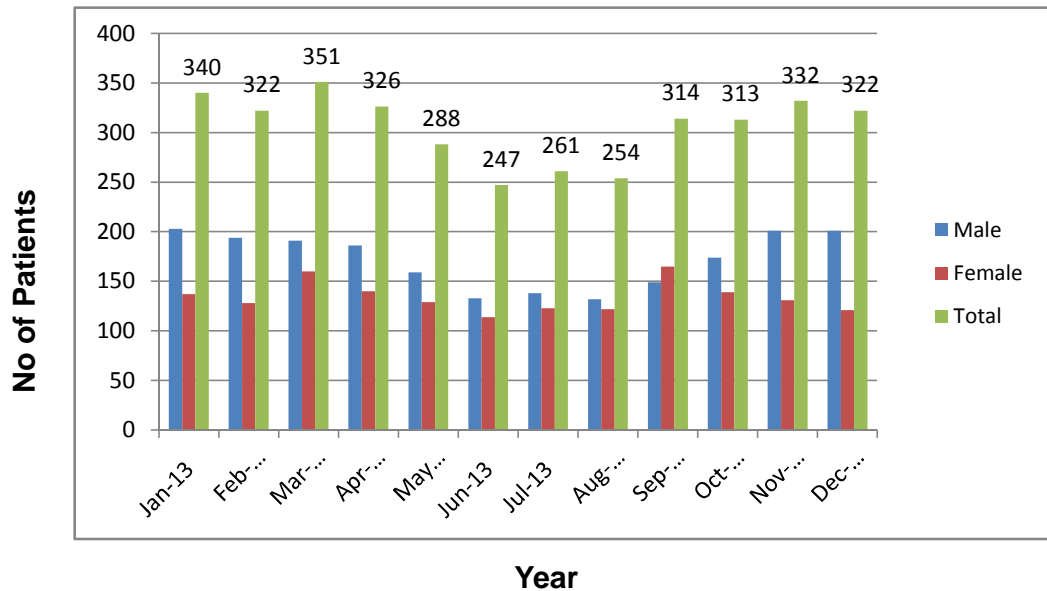
Summary Of Admission
Jan 2013 - Dec 2013



Karachi Institute of Heart Diseases
Summary of X-Ray
Jan 2013 To Dec 2013

S.No	Month & Year	Male	Female	Total
1	Jan-13	203	137	340
2	Feb-13	194	128	322
3	Mar-13	191	160	351
4	Apr-13	186	140	326
5	May-13	159	129	288
6	Jun-13	133	114	247
7	Jul-13	138	123	261
8	Aug-13	132	122	254
9	Sep-13	149	165	314
10	Oct-13	174	139	313
11	Nov-13	201	131	332
12	Dec-13	201	121	322
Total		2061	1609	3670

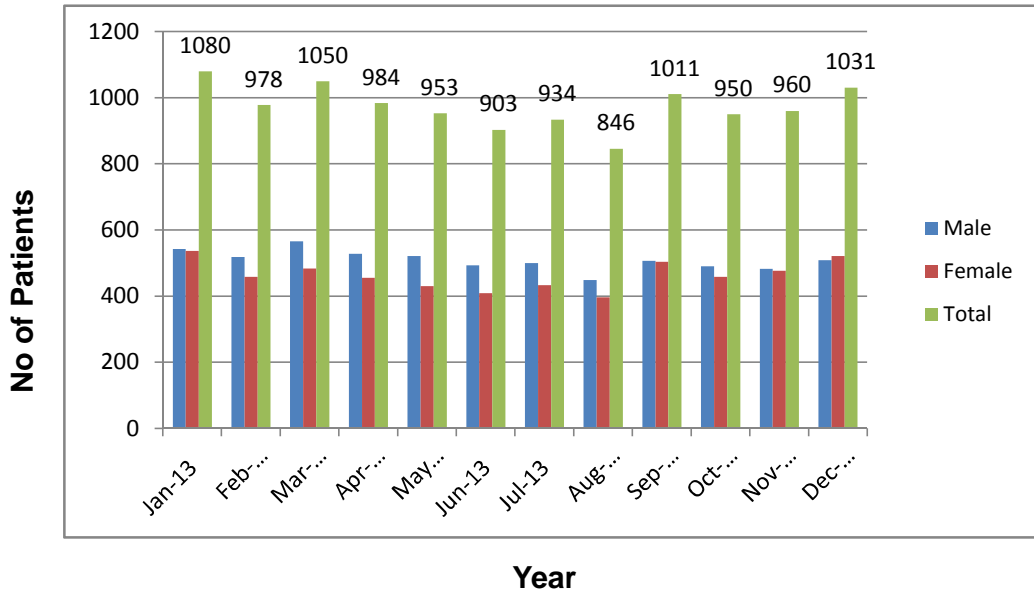
Summary Of X-Rays
Jan 2013 - Dec 2013



Karachi Institute of Heart Diseases
Summary of Echo
Jan 2013 To Dec 2013

S.No	Month & Year	Male	Female	Total
1	Jan-13	543	537	1080
2	Feb-13	519	459	978
3	Mar-13	566	484	1050
4	Apr-13	528	456	984
5	May-13	522	431	953
6	Jun-13	494	409	903
7	Jul-13	500	434	934
8	Aug-13	449	397	846
9	Sep-13	507	504	1011
10	Oct-13	491	459	950
11	Nov-13	483	477	960
12	Dec-13	509	522	1031
Total		6111	5569	11680

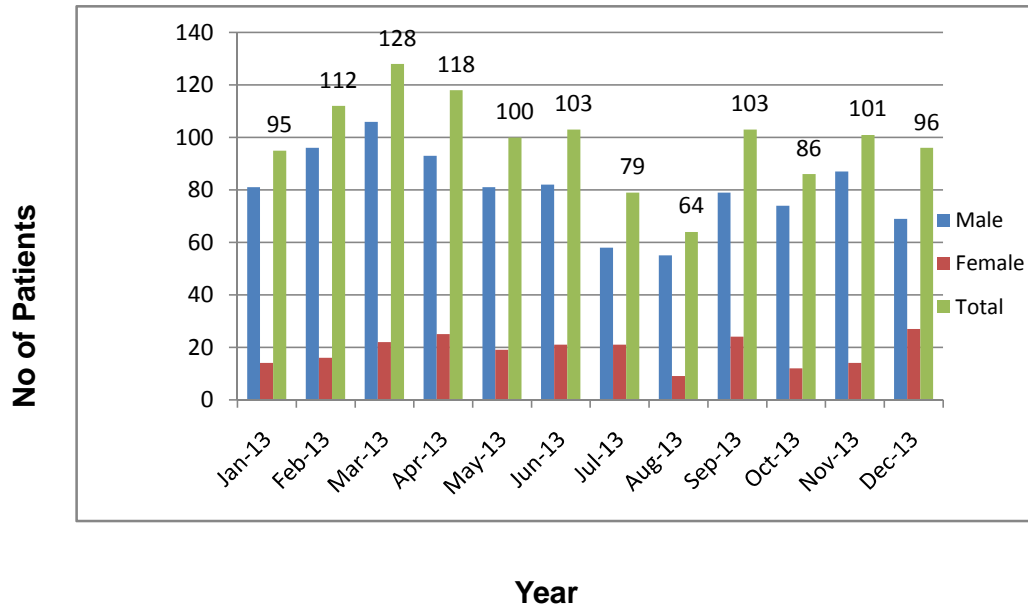
Summary Of ECHO
Jan 2013 - Dec 2013



Karachi Institute of Heart Diseases
Summary of ETT
Jan 2013 To Dec 2013

S.No	Month & Year	Male	Female	Total
1	Jan-13	81	14	95
2	Feb-13	96	16	112
3	Mar-13	106	22	128
4	Apr-13	93	25	118
5	May-13	81	19	100
6	Jun-13	82	21	103
7	Jul-13	58	21	79
8	Aug-13	55	9	64
9	Sep-13	79	24	103
10	Oct-13	74	12	86
11	Nov-13	87	14	101
12	Dec-13	69	27	96
Total		961	224	1185

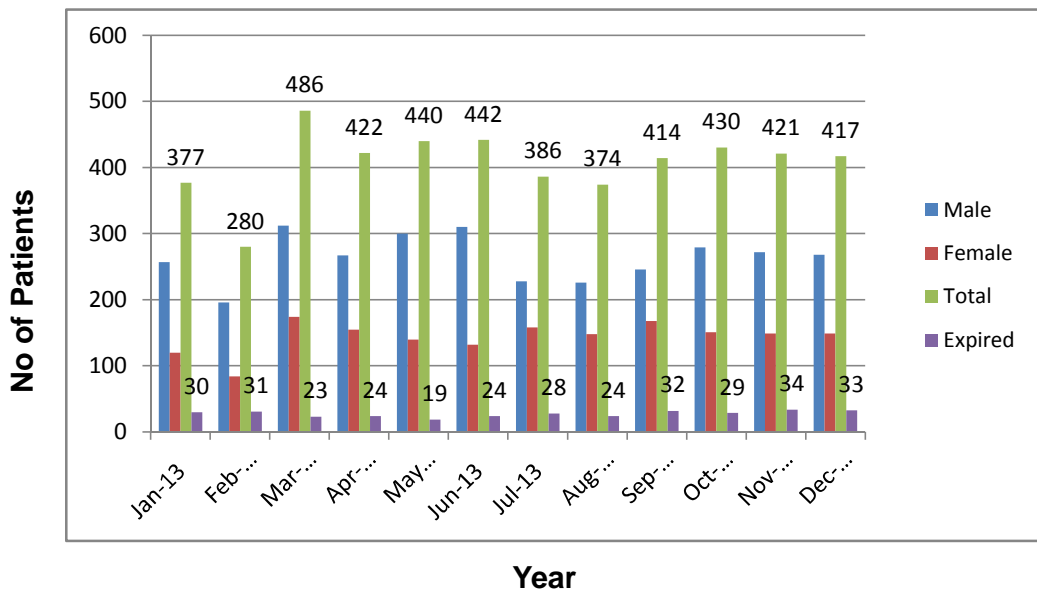
Summary Of ETT
Jan 2013 - Dec 2013



Karachi Institute of Heart Diseases
Summary of CCU
Jan 2013 To Dec 2013

S.No	Month & Year	Male	Female	Total	Expired	Male	Female
1	Jan-13	257	120	377	30	20	10
2	Feb-13	196	84	280	31	22	9
3	Mar-13	312	174	486	23	11	12
4	Apr-13	267	155	422	24	12	12
5	May-13	300	140	440	19	12	7
6	Jun-13	310	132	442	24	17	7
7	Jul-13	228	158	386	28	16	12
8	Aug-13	226	148	374	24	13	11
9	Sep-13	246	168	414	32	16	16
10	Oct-13	279	151	430	29	15	14
11	Nov-13	272	149	421	34	19	15
12	Dec-13	268	149	417	33	23	10
Total		3161	1728	4889	331	196	135

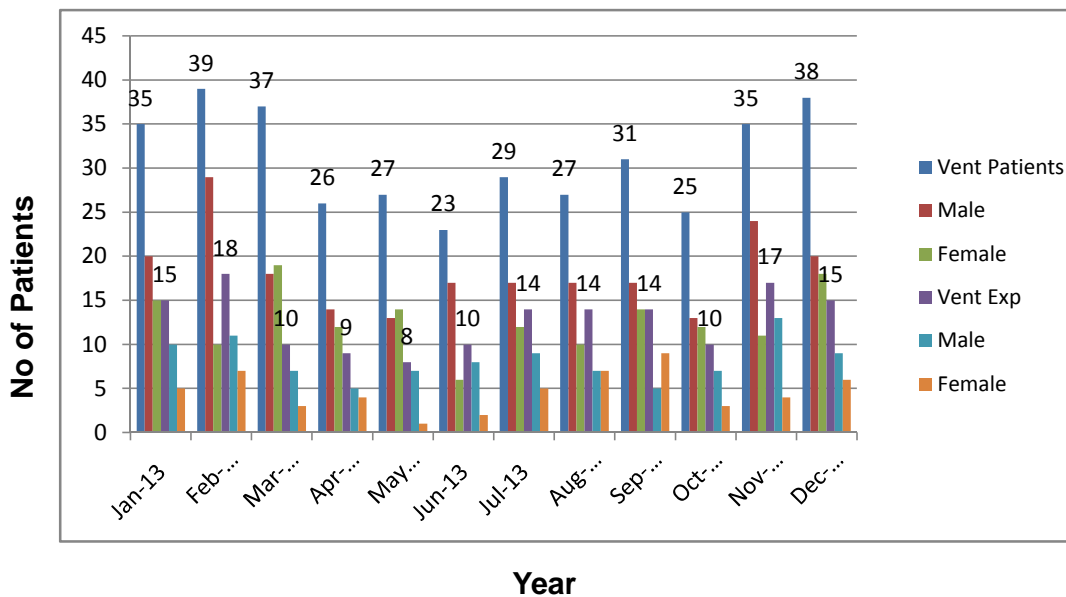
Summary Of CCU
Jan 2013 - Dec 2013



Karachi Institute of Heart Diseases
Summary of CCU
Jan 2013 To Dec 2013

S.No	Month & Year	Vent Patients	Male	Female	Vent Exp	Male	Female
1	Jan-13	35	20	15	15	10	5
2	Feb-13	39	29	10	18	11	7
3	Mar-13	37	18	19	10	7	3
4	Apr-13	26	14	12	9	5	4
5	May-13	27	13	14	8	7	1
6	Jun-13	23	17	6	10	8	2
7	Jul-13	29	17	12	14	9	5
8	Aug-13	27	17	10	14	7	7
9	Sep-13	31	17	14	14	5	9
10	Oct-13	25	13	12	10	7	3
11	Nov-13	35	24	11	17	13	4
12	Dec-13	38	20	18	15	9	6
Total		372	219	153	154	98	56

Summary Of CCU
Jan 2013 - Dec 2013



|

|

|

|

|

|

|

|

|
